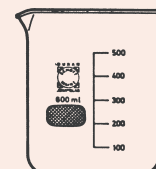


### Becher, niedere Form, mit Teilung und Ausguß, Boro 3.3

Beakers, low form, with graduation and spout

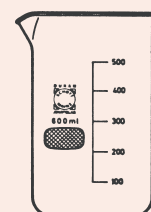
| Best.-Nr.<br>Cat.-No. | Inhalt ml<br>Capacity ml |
|-----------------------|--------------------------|
| 7.0010.10             | 5                        |
| 7.0010.13             | 10                       |
| 7.0010.22             | 25                       |
| 7.0010.28             | 50                       |
| 7.0010.37             | 100                      |
| 7.0010.43             | 150                      |
| 7.0010.49             | 250                      |
| 7.0010.55             | 400                      |
| 7.0010.61             | 600                      |
| 7.0010.67             | 800                      |
| 7.0010.70             | 1000                     |
| 7.0010.73             | 2000                     |
| 7.0010.76             | 3000                     |
| 7.0010.82             | 5000                     |
| 7.0010.88             | 10000                    |

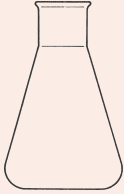


### Becher, hohe Form, mit Teilung und Ausguß, Boro 3.3

Beakers, low form, with graduation and spout

| Best.-Nr.<br>Cat.-No. | Inhalt ml<br>Capacity ml |
|-----------------------|--------------------------|
| 7.0040.28             | 50                       |
| 7.0040.37             | 100                      |
| 7.0040.43             | 150                      |
| 7.0040.49             | 250                      |
| 7.0040.55             | 400                      |
| 7.0040.61             | 600                      |
| 7.0040.67             | 800                      |
| 7.0040.70             | 1000                     |
| 7.0040.73             | 2000                     |
| 7.0040.76             | 3000                     |





### Erlenmeyerkolben, enghalsig, mit Teilung, Boro 3.3

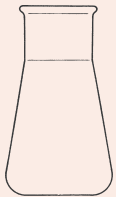
Erlenmeyer flasks, narrow neck with graduation

| Best.-Nr.<br>Cat.-No. | Inhalt ml<br>Capacity ml |
|-----------------------|--------------------------|
| 7.0200.22             | 25                       |
| 7.0200.28             | 50                       |
| 7.0200.37             | 100                      |
| 7.0200.46             | 200                      |
| 7.0200.49             | 250                      |
| 7.0200.52             | 300                      |
| 7.0200.58             | 500                      |
| 7.0200.70             | 1000                     |
| 7.0200.73             | 2000                     |
| 7.0200.76             | 3000                     |
| 7.0200.82             | 5000                     |

### Erlenmeyerkolben, weithalsig, mit Teilung, Boro 3.3

Erlenmeyer flasks, wide neck with graduation

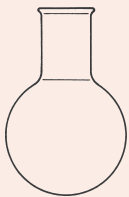
| Best.-Nr.<br>Cat.-No. | Inhalt ml<br>Capacity ml |
|-----------------------|--------------------------|
| 7.0250.22             | 25                       |
| 7.0250.28             | 50                       |
| 7.0250.37             | 100                      |
| 7.0250.46             | 200                      |
| 7.0250.49             | 250                      |
| 7.0250.52             | 300                      |
| 7.0250.70             | 1000                     |
| 7.0250.73             | 2000                     |



### Rundkolben, enghalsig, mit Bördelrand, Boro 3.3

Fasks, round bottom, narrow neck, with beaded rim

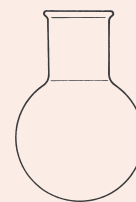
| Best.-Nr.<br>Cat.-No. | Inhalt ml<br>Capacity ml |
|-----------------------|--------------------------|
| 7.0300.28             | 50                       |
| 7.0300.37             | 100                      |
| 7.0300.49             | 250                      |
| 7.0300.58             | 500                      |
| 7.0300.70             | 1000                     |
| 7.0300.73             | 2000                     |
| 7.0300.76             | 3000                     |
| 7.0300.79             | 4000                     |
| 7.0300.82             | 5000                     |
| 7.0300.85             | 6000                     |
| 7.0300.88             | 10000                    |
| 7.0300.94             | 20000                    |



### Rundkolben, weithalsig, mit Bördelrand, Boro 3.3

Fasks, round bottom, wide neck, with beaded rim

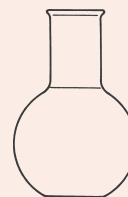
| Best.-Nr.<br>Cat.-No. | Inhalt ml<br>Capacity ml |
|-----------------------|--------------------------|
| 7.0350.28             | 50                       |
| 7.0350.37             | 100                      |
| 7.0350.49             | 250                      |
| 7.0350.58             | 500                      |
| 7.0350.70             | 1000                     |
| 7.0350.73             | 2000                     |
| 7.0350.79             | 4000                     |
| 7.0350.85             | 6000                     |
| 7.0350.88             | 10000                    |
| 7.0350.94             | 20000                    |

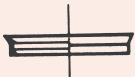


### Stehkolben, enghalsig, mit Bördelrand, Boro 3.3

Fasks, round bottom, narrow neck, with beaded rim

| Best.-Nr.<br>Cat.-No. | Inhalt ml<br>Capacity ml |
|-----------------------|--------------------------|
| 7.0450.28             | 50                       |
| 7.0450.37             | 100                      |
| 7.0450.49             | 250                      |
| 7.0450.58             | 500                      |
| 7.0450.70             | 1000                     |
| 7.0450.73             | 2000                     |
| 7.0450.79             | 4000                     |
| 7.0450.82             | 5000                     |
| 7.0450.85             | 6000                     |
| 7.0450.88             | 10000                    |





### Laborflasche mit ISO-Gewinde, mit Teilung, Boro 3.3 mit Schraubverschlußkappe und Ausgießring aus PPN (blau)

Laboratory bottles, screw-cap with ISO threads, graduated, with PPN screw-cap and PPN pouring ring (blue)

| Best.-Nr.<br>Cat.-No. | Inhalt ml<br>Capacity ml | GL<br>Thread |
|-----------------------|--------------------------|--------------|
| 7.1050.22             | 25                       | 25           |
| 7.1050.28             | 50                       | 32           |
| 7.1050.37             | 100                      | 45           |
| 7.1050.49             | 250                      | 45           |
| 7.1050.58             | 500                      | 45           |
| 7.1050.70             | 1000                     | 45           |
| 7.1050.73             | 2000                     | 45           |
| 7.1050.82             | 5000                     | 45           |
| 7.1050.88             | 10000                    | 45           |
| 7.1050.91             | 15000                    | 45           |
| 7.1050.94             | 20000                    | 45           |

### Einzelteile

Spare parts

#### Schraubverschlußkappe aus PPN, mit Lippendichtung, beständig bis 140 °C

PPN screw-cap, with lip seal, to withstand up to 140 °C

| Best.-Nr.<br>Cat.-No. | ISO-Gewinde GL<br>ISO-thread GL | Farbe<br>Colour |
|-----------------------|---------------------------------|-----------------|
| 7.1051.00             | 25                              | blau / blue     |
| 7.1052.00             | 32                              | blau / blue     |
| 7.1053.00             | 45                              | blau / blue     |

#### Ausgießring aus PPN, beständig bis 140 °C

PPN pouring ring, to withstand up to 140 °C

| Best.-Nr.<br>Cat.-No. | ISO-Gewinde GL<br>ISO-thread GL | Farbe<br>Colour |
|-----------------------|---------------------------------|-----------------|
| 7.1054.01             | 32                              | blau / blue     |
| 7.1054.00             | 45                              | blau / blue     |

#### Schraubverschlußkappe aus Resinol, komplett mit PTFE-beschichteter Dichtung, beständig bis 180 °C

Resinol screw-cap complete with PTFE protected seal, to withstand up to 180 °C

| Best.-Nr.<br>Cat.-No. | ISO-Gewinde GL<br>ISO-thread GL | Farbe<br>Colour |
|-----------------------|---------------------------------|-----------------|
| 7.1055.02             | 25                              | rot / red       |
| 7.1055.01             | 32                              | rot / red       |
| 7.1055.00             | 45                              | rot / red       |

## Ausgießring aus PTFE, beständig bis 200 °C

PTFE pouring ring, to withstand up to 200 °C

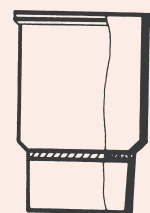
| Best.-Nr.<br>Cat.-No. | ISO-Gewinde GL<br>ISO-thread GL | Farbe<br>Colour |
|-----------------------|---------------------------------|-----------------|
| 7.1056.01             | 32                              | rot / red       |
| 7.1056.00             | 45                              | rot / red       |



## Filtertiegel, Boro 3.3

Filter crucibles

| Best.-Nr.<br>Cat.-No. | Inhalt ml<br>Capacity ml | Porosität<br>Porosity | Platte Ø mm<br>Disc. dia. mm |
|-----------------------|--------------------------|-----------------------|------------------------------|
| 7.1852.20             | 8                        | 2                     | 20                           |
| 7.1853.20             | 8                        | 3                     | 20                           |
| 7.1854.20             | 8                        | 4                     | 20                           |
| 7.1851.23             | 15                       | 1                     | 23                           |
| 7.1852.23             | 15                       | 2                     | 23                           |
| 7.1853.23             | 15                       | 3                     | 23                           |
| 7.1854.23             | 15                       | 4                     | 23                           |
| 7.1851.30             | 30                       | 1                     | 30                           |
| 7.1852.30             | 30                       | 2                     | 30                           |
| 7.1853.30             | 30                       | 3                     | 30                           |
| 7.1854.30             | 30                       | 4                     | 30                           |
| 7.1851.40             | 50                       | 1                     | 40                           |
| 7.1852.40             | 50                       | 2                     | 40                           |
| 7.1853.40             | 50                       | 3                     | 40                           |
| 7.1854.40             | 50                       | 4                     | 40                           |



## Gummimanschetten für Filtertiegel

Rubber sleeves for filter crucibles

| Best.-Nr.<br>Cat.-No. | Ø a.mm<br>O.D. mm |
|-----------------------|-------------------|
| 7.1870.26             | 26                |
| 7.1870.33             | 33                |
| 7.1870.41             | 41                |
| 7.1870.49             | 49                |





### Filtriervorstöße, Boro 3.3

Adapters for filter funnels

| Best.-Nr.<br>Cat.-No. | Ø i.oben mm<br>Top I.D. mm | Länge mm<br>Length mm |
|-----------------------|----------------------------|-----------------------|
| 7.1890.27             | 27                         | 110                   |
| 7.1890.34             | 34                         | 110                   |
| 7.1890.41             | 41                         | 125                   |
| 7.1890.50             | 50                         | 132                   |

### Filternutschen, Boro 3.3

Filter funnels

| Best.-Nr.<br>Cat.-No. | Inhalt ml<br>Capacity ml | Porosität<br>Porosity | Platte Ø mm<br>Disc. dia. mm |
|-----------------------|--------------------------|-----------------------|------------------------------|
| 7.1951.28             | 50                       | 1                     | 35                           |
| 7.1952.28             | 50                       | 2                     | 35                           |
| 7.1953.28             | 50                       | 3                     | 35                           |
| 7.1954.28             | 50                       | 4                     | 35                           |
| 7.1951.34             | 75                       | 1                     | 45                           |
| 7.1952.34             | 75                       | 2                     | 45                           |
| 7.1953.34             | 75                       | 3                     | 45                           |
| 7.1954.34             | 75                       | 4                     | 45                           |
| 7.1951.40             | 125                      | 1                     | 60                           |
| 7.1952.40             | 125                      | 2                     | 60                           |
| 7.1953.40             | 125                      | 3                     | 60                           |
| 7.1954.40             | 125                      | 4                     | 60                           |
| 7.1951.58             | 500                      | 1                     | 90                           |
| 7.1952.58             | 500                      | 2                     | 90                           |
| 7.1953.58             | 500                      | 3                     | 90                           |
| 7.1954.58             | 500                      | 4                     | 90                           |
| 7.1951.70             | 1000                     | 1                     | 120                          |
| 7.1952.70             | 1000                     | 2                     | 120                          |
| 7.1953.70             | 1000                     | 3                     | 120                          |
| 7.1954.70             | 1000                     | 4                     | 120                          |
| 7.1951.79             | 4000                     | 1                     | 175                          |
| 7.1952.79             | 4000                     | 2                     | 175                          |
| 7.1953.79             | 4000                     | 3                     | 175                          |
| 7.1954.79             | 4000                     | 4                     | 175                          |



## Guko-Satz (Gummidichtungen, konisch) für Filternutschen

Guko-set (Rubber gaskets, conical) for filter funnels

Best.-Nr.

Cat.-No.

|           |                                |
|-----------|--------------------------------|
| 7.1970.08 | 8 Guko Größe 22 - 89           |
|           | 8 Guko gaskets, sizes 22 to 89 |



## Guko (Gummidichtungen, konisch) für Filternutschen

Guko (Rubber gaskets, conical) for filter funnels

Best.-Nr.

Cat.-No.

Nenngröße a. Ø oben mm

Nominal size top O.D. mm

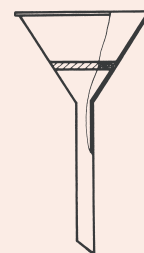
|           |    |
|-----------|----|
| 7.1990.22 | 22 |
| 7.1990.28 | 28 |
| 7.1990.35 | 35 |
| 7.1990.42 | 42 |
| 7.1990.50 | 50 |
| 7.1990.63 | 63 |
| 7.1990.76 | 76 |
| 7.1990.89 | 89 |



## Filtertrichter, Kegelform, Boro 3.3

Filter funnels, conical shape

| Best.-Nr.<br>Cat.-No. | Inhalt ml<br>Capacity ml | Porosität<br>Porosity | Platte Ø mm<br>Disc. dia. mm |
|-----------------------|--------------------------|-----------------------|------------------------------|
| 7.2003.25             | 25                       | 3                     | 25                           |
| 7.2004.25             | 25                       | 4                     | 25                           |



## Gasverteilungsrohr, seitlich angeschmolzen, Boro 3.3

Gas distribution tubes

| Best.-Nr.<br>Cat.-No. | Porosität<br>Porosity | Napf Ø mm<br>Bowl dia. mm | Rohr Ø a.mm<br>Tube O.D. mm | Länge mm<br>Length mm |
|-----------------------|-----------------------|---------------------------|-----------------------------|-----------------------|
| 7.2110.25             | 0                     | 22                        | 6                           | 250                   |
| 7.2111.25             | 1                     | 22                        | 6                           | 250                   |
| 7.2112.25             | 2                     | 22                        | 6                           | 250                   |

